

2009 Flex

Step: 1

Using a non marring tool unsnap the transmission selector trim bezel and cup holder assembly. (See figure A)

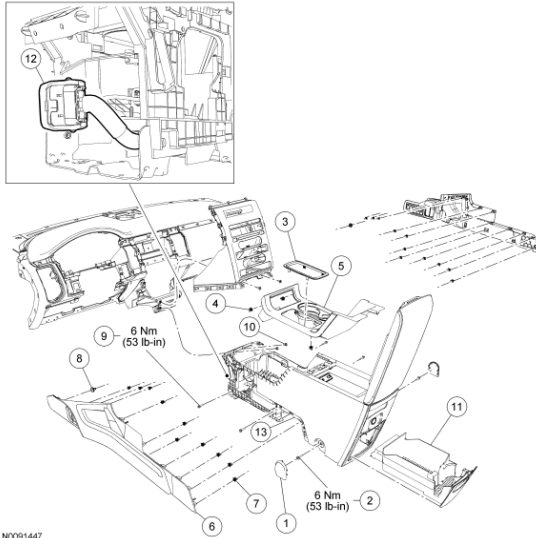


Figure A

Step: 2

Remove two 7mm screws now exposed (See figure B)

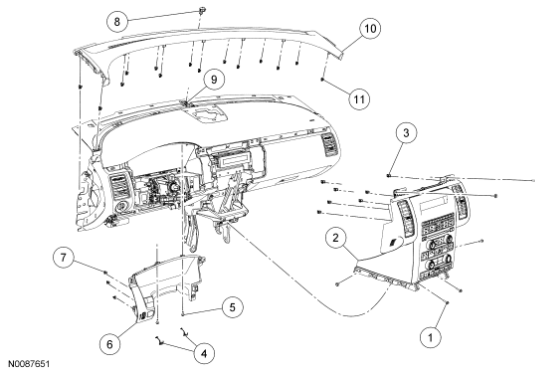


Figure B

Step: 3

Remove center console bottom side covers (one on each side). (See figure A)

Step: 4

Remove two 7mm screws now exposed one on each side.

Step: 6

Remove trim bezel above center dash area extending to passenger door (trim bezel has Flex logo on it).

Step: 7

Remove two 7mm bolts above center stack radio control area now exposed.

Step: 8

Entire center console will now unsnap as one piece. (See figure B)

Step: 9

Disconnect all connectors and radio chassis will come out with bezel.

Step: 10

Disconnect 24 Pin Main Radio Connector and connect supplied 24 pin T-harness.

Step: 11

Route the harness across dash through passenger side behind glove box and up A-pillar.

* note if installing behind sun visor route cable up driver side

Step: 12

Remove the A-pillar trim bezel by pulling on the upper part of the trim bezel toward the rear of the vehicle **careful not to damage the tether holding the A-pillar**. To fully remove bezel speaker must be disconnected.

Step: 13

Route Harness to opening cut in headliner and connect to Bluetooth unit **making sure not to cut in front of side curtain airbag unit. The harness must be between the vehicle metal and the airbag and not between the airbag and the plastic housing and or headliner.**

Step: 10

Reassemble A-pillar/ Radio/ Center Console and Dash bezel.